

GROXX TRAPEZOIDAL BASE PLATE POST

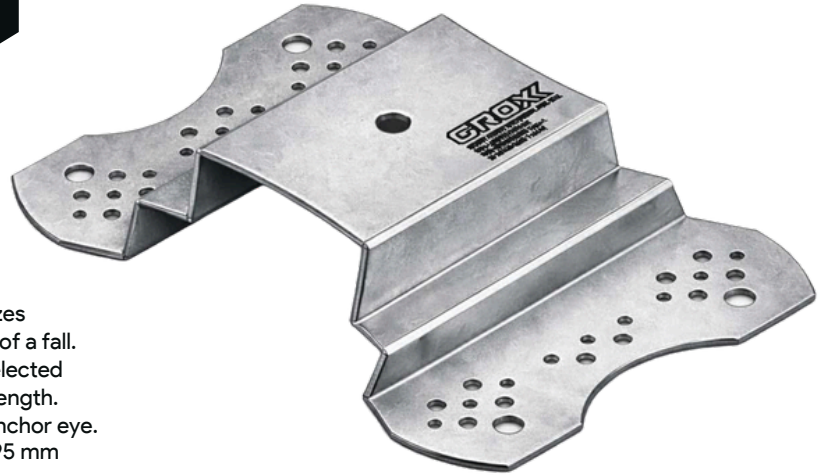
GGTP008

GROXX

TECHNICAL SPECIFICATION

FEATURES

- The Extremity Anchor Post is designed for installation on trapezoidal roofing with a minimum sheet thickness of 0.40 mm.
- It features a built-in energy-absorbing anchor that minimizes impact forces on both users and roof profiles in the event of a fall.
- Installation is quick and straightforward using rivets and selected screws, fixed directly to the purlin for added structural strength.
- Users connect to the system by attaching directly to the anchor eye.
- Compatible with trapezoidal sheet pitches ranging from 195 mm to 305 mm.
- Supplied with EPDM rubber components to ensure effective waterproofing.
- Rated for up to four users when used as part of a lifeline system.



HOW TO USE

Refer to User Instruction Manual 

METAL COMPONENTS

Base Plate :	316 Stainless Steel : ED Coated Grey
Corner :	316 Stainless Steel: Electro-Polished
Bolt :	316 Stainless Steel
Minimum Breaking Strength:	15 kN

WEIGHT

1.9 kgs

RELEVANT STANDARDS

Conforms to EN 795:2012
TYPE A TS16415:2013

 0598

